



Welcome

TO

Oaks Park Sixth Form

OPEN EVENING

Thursday 13th November 2025
3.00pm - 6.00pm

Celebrating Outstanding A Level Results in 2024 & 2025



Chromebooks available for
all Sixth Form Students

OAKS PARK SIXTH FORM

Key Stage 5 Outcomes 2025



Our Sixth Form is a thriving, ambitious community where students achieve excellent results and confidently shape their futures. The 2025 outcomes, among our best ever, reflect exceptional teaching, tailored support, and a culture of high aspiration.

Outstanding Academic Achievement

This year's A Level results were exceptional. Students achieved our strongest grades in three years, with a record number attaining top results:

These outcomes place our students above national averages, showcasing academic excellence and strong progress across all abilities.

Achievements in 2024 - 2025
22% of grades at A-A*
53% of grades at A-B*
88% of grades at A-C*
99% overall pass rate

Excellence in Vocational Pathways

Our vocational programmes continue to go from strength to strength, offering students a range of high-quality, career-focused qualifications.

These results confirm our reputation for delivering first class outcomes across both academic and applied routes.

Pathways 2024 - 2025
67% of students achieved Distinction-Distinction*
94% achieved Merit or above
100% passed their course

Exceptional Progress and Value Added

Our students don't just meet expectations — they exceed them. The Sixth Form achieved an **ALPS Grade 2 (Outstanding)**, placing us in the top **10% of providers nationally** for progress. Disadvantaged students achieved an **ALPS Grade 1, placing them in the top 5% nationally** — a testament to our commitment to equity and excellence for all.

Future Pathways and Destinations

Our students progress to exciting futures, including places at some of the UK's most prestigious universities and employers.

A Launchpad for Success

Our Sixth Form blends academic rigour with outstanding support, helping students develop the skills, confidence, and independence for life beyond school. Whether pursuing university, apprenticeships, or professional pathways, they leave ready to make their mark.

Destinations 2024 - 2025
117 students secured university places
18% are progressing to Russell Group Universities
Others are embarking on degree apprenticeships, employment, or gap year opportunities , including placements with top firms such as Deloitte and HMRC .

Oaks Park Sixth Form

Transition Programme

The transition from Year 11 to Year 12 is a vital stage at Oaks Park High School, helping students become confident, independent, and motivated learners. We prioritise both student wellbeing and academic progress, ensuring every learner settles smoothly into Sixth Form life.

Some key features of our Year 11 Transition Programme are as follows:

- **Induction Day (June)**

This day introduces students to Oaks Park, their tutors, and the expectations of Sixth Form life. It includes study skills and careers workshops, plus a form trip to help students build relationships and feel part of the community.

- **Summer Transition Pack**

Each student receives subject-specific tasks to complete over the summer, designed to bridge the gap between GCSE and A Level learning.

- **Parents' Information Evening**

In September, students and parents meet tutors and the Sixth Form team to learn about expectations, support systems, and how to help students reach their full potential.

- **Chromebooks & UpLearn**

All Year 12 students receive a Chromebook and UpLearn account, giving access to high-quality, adaptive online resources. These tools support organisation, independent study, and personalised learning, helping students achieve their best both in and out of the classroom.

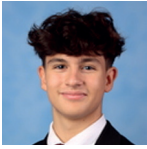
- **Ongoing Support**

Our broad, challenging curriculum is delivered through engaging lessons and supported by strong assessment and reporting systems. A supervised homework club runs daily in the independent learning room to encourage effective study habits. Baseline Reports help track progress early and keep parents informed.

- **Course Flexibility**

Students have a two-week settling period to adjust their subject choices, provided entry requirements are met and places are available.

What our students say



Eren

When faced with the crucial decision of which Sixth Form to attend, I had to decide which one would provide the support I needed for what most consider the two most challenging years of one's life. Knowing the staff here at Oaks Park, I knew that any student willing to endure the challenges of A levels would receive more than the necessary support required. Oaks Park Sixth Form has given me a seamless transition from GCSEs to A levels, but their support has gone beyond academics by allowing me to: take part in the Ritangle Maths Competition, offering LAMDA lessons, through which I built confidence and mastery in public speaking, and collaborate with other schools, letting me build connections and network with new people.



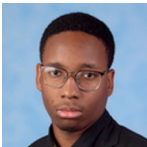
Shaahana

Sixth form is the bridge between secondary education and higher education, and Oaks Park Sixth form definitely offers you a smooth and well supported transition between the two. Having been at Oaks Park for nearly 7 years now, there is no doubt that Oaks park helps develop students who are ready for post-18 life - whether those may be workshops, lectures or through academic work. The Sixth Form aids students to become independent and mature in the 2 short years by giving opportunities to network amongst other schools and institutions. Without question, Oaks Park truly allows their students to create fond memories in such intensive years of their lives through trips and kind hearted experience amongst peers.



Elvana

Having been at Oaks Park since Year 7, starting Sixth Form felt like stepping into a whole new world, it was so overwhelming. But choosing to stay here is a decision I will never regret. Over the past two years, I've made so many friends and met some amazing people, and was given so many opportunities. The staff are incredibly friendly and always greet you with a smile and while that might seem like a small thing, when exam stress hits, a simple smile can really brighten your day. I'm so grateful for all the support I've received and the countless good memories I've made along the way. A Levels are really difficult, but having people you can talk to makes the stress much easier to handle.



Camren

When I started at Oaks Park Sixth Form, I definitely felt that jump in difficulty from GCSE to A Level, and honestly that transition would have been way more difficult if I did not have the full support of the staff team here. From guiding me in order to cope with a more intensive workload, to preparing me for my journey into more advanced academics, my form tutors and subject teachers have played a vital role in preparing me for the world beyond school.

Throughout my time here, I've also had many opportunities to grow personally, whether it be gaining confidence in public speaking or having the chance to meet and interact with some great new people.



Sahar

During my time at Oaks Park High School since year 7, I have felt consistently and adequately supported by the staff in regards to my educational and personal difficulties. I've grown up surrounded by teachers and peers who genuinely care about helping every student reach their potential. The sense of community here is supportive and encouraging and the school is full of opportunities to get involved whether in academic or enrichment activities. Moving into the sixth form felt like a natural next step, with the same familiar environment but a new level of independence and responsibility.



Rogid

During my time at Oaks Park Sixth form, despite all of the new circumstances I always felt supported by my subject teachers and the school community. There were always new opportunities to be discovered, especially with work experience, and any new challenges to be tackled, such as mock exams/PPEs or personal statements always felt manageable with the support I received.

Roll of Honour

Top 20 students for attainment

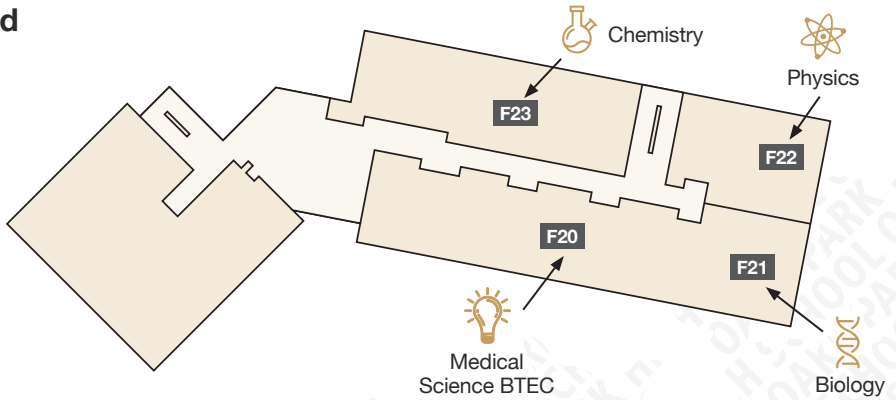
Vismaya	Mantra	Zayna	Shania	Rayyan
English, Gov and Politics, Sociology	Computer Science, Mathematic, Physics	Economics, Sociology, IT Cambridge National	Business, Geography, Mathematics	Economics, Mathematics, Physics
A*, A*, A*	A, A*, A*	A, A*, Dist*	A*, A*, B	A, A*, A
Payel	Nusayba	Emil	Ruxandra	Laiba
Biology, Chemistry, Mathematics	Biology, Chemistry, Psychology	Chemistry, History and Mathematics	English, Mathematics, Physics	Further Mathematics, Maths, Physics
A*, A, A	A*, A, A	A, A*, A	A, A, A	B, A*, A
Caitlin	Zuzanna	Shazeb	Paula	Octavian
Health Social Care, Psychology, Sociology	Government and Politics, Psychology, Sociology	Further Maths, Mathematics, Physics	Business, Health Social Care, Psychology	Biology, Mathematics, Physics
D*, A, A	A, B, A	A, A*, C	B, D*, A	B, A, A
Maria	Habiba	Faisal	Almaz	Ali
Business, English, Psychology	Biology, Chemistry, Sociology	Biology, Chemistry, Mathematics	English, Psychology, RE	Maths, Physics, RE
B, A, A	B, A, A	A, A, B	A, B, A	B, B, A*

Top 20 students for value added

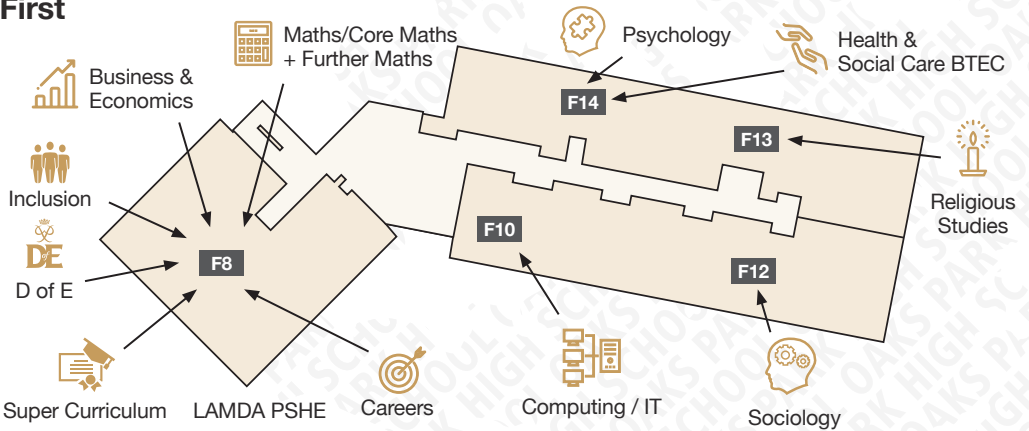
Florin	Dhillon	Prajeeth	Thanlesh	Vismaya
Physics, Chemistry, Maths	Physics, Chemistry, Mathematics	Chemistry, Mathematics, Physics	Chemistry, Further Maths, Maths	English, Gov and Politics, Sociology
B, B, B	A, B, B	B, B, A	B, C, A	A*, A*, A*
Value Added Score: 2.26	Value Added Score: 2.21	Value Added Score: 2.13	Value Added Score: 1.76	Value Added Score: 1.75
Saleh	Aman	Aamina	Habiba	Omar
Business, Computer Science, Gov and Politics	Economics, Mathematics, Sociology	Biology, Psychology, Extra Science	Biology, Chemistry, Sociology	Physics, Maths, Economics
B, C, A	B, A, B	B,B, Dist	B, A, A	A, A,
Value Added Score: 1.74	Value Added Score: 1.74	Value Added Score: 1.60	Value Added Score: 1.57	Value Added Score: 1.47
Octavian	Arun	Mantra	Arwa	Caitlin
Biology, Mathematics, Physics	Gov and politics, BTEC Business, IT Cambridge National	Computer Science, Mathematics, Physics	English, Gov and Politics, History	Health Social Care, Psychology, Sociology
B, A, A	B, Dist, Dist	A, A*, A*	B, A, B	D*, A, A
Value Added Score: 1.27	Value Added Score: 1.24	Value Added Score: 1.24	Value Added Score: 1.21	Value Added Score: 1.20
Maariya	Abdul	Amrit	Zayn	Saarah
RE, Sociology, History	Maths, Physics, Computer Science	Maths, Physics, IT Cambridge National	Sociology, Economics, IT Cambridge National	English, RE, Sociology
B, B, C	B, C, C	A, A, Dist	B, C, Merit	B, B, B
Value Added Score: 1.18	Value Added Score: 1.14	Value Added Score: 1.11	Value Added Score: 1.08	Value Added Score: 1.05

Craig Foster Building

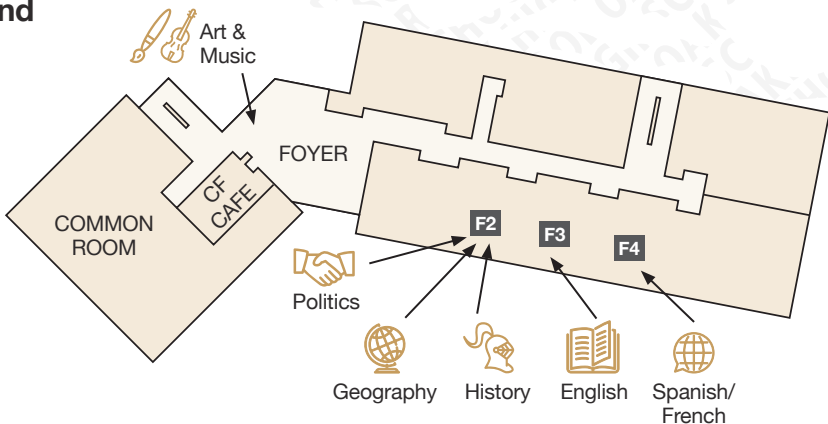
Second



First



Ground



New Vocational Pathway: Digital Media & Computing Applications Level 3 AAQ

Equivalent to 3 A Levels | Future-Focused | Creative | Technically Driven

We are excited to introduce our **new Digital Media & Computing Applications Pathway** — a cutting-edge post-16 programme designed for students who want to be at the forefront of the digital revolution.

This **Level 3 AAQ** offers a full three A-Level-equivalent qualification, blending creativity with technical skill to prepare you for success in both university and the ever-evolving tech industry.

Through a combination of **hands-on projects, app and software development, and digital media production**, you'll gain the skills to design, test, and deliver innovative digital solutions. The course encourages **problem-solving, critical thinking, and real-world application**, ensuring you graduate with the confidence and capability to thrive in digital careers.

You'll study two complementary qualifications:

- **AAQ Computing Applications (Application Development)** – Focused on practical computing skills, including programming, app development, and software design. This qualification develops the technical expertise needed for IT and computing roles without the heavy theoretical focus of traditional Computer Science.
- **OCR Cambridge Technical Diploma in Digital Media (Double Course)** – A creative and applied qualification equivalent to two A Levels, where you'll plan, design, and produce digital media projects. You'll explore concept design, interactive media, and moving image production, building a professional portfolio that meets real client and audience needs.

Together, these courses offer a **balanced mix of creativity and technical mastery**, giving you a competitive edge for higher education or direct entry into careers in digital media, software development, marketing, or technology innovation.

Subject	Exam board	Subject specific entry criteria
Computing Applications (Cambridge Technical Diploma)	OCR	Grade 4 in IT or equivalent if studied OR Five 9-4 grades including Grade 5 in Maths and English Language
Digital Media (Cambridge Technical Diploma Double Course)	OCR	Grade 5 in Maths, Grade 5 in English Language, Minimum Pass in IT if studied plus 2 additional GCSE's at Grade 4 or above (This double award course can be studied with Computing Applications as a triple award)



Sixth Form Entry Requirements 2026

Updated in October 2025 for entries from September 2026

To join Oaks Park Sixth Form, candidates are usually required to have a minimum of 5 GCSE grades 9-4 and a good record of behaviour and attendance. Students are able to choose 3 or 4 (if their academic profile supports this) subjects with the option to add additional Level 3 qualifications such as the Extended Project Qualification, Core Maths or enrichment opportunities such as LAMDA, Duke of Edinburgh or Lowland Leader Awards.

Pathway 1 Applicants (4 A Levels)

We expect Pathway 1 applicants to achieve 5 GCSEs at grades 7-9, with a minimum of a grade 5 in English Language or Literature and Mathematics, and the relevant subject specific entry criteria. Average point score of 7 or above.

Pathway 2 Applicants (3 A Levels)

We expect Pathway 2 applicants to achieve 5 GCSEs at grades 5-9, with a minimum of a grade 5 in English Language or Literature and Mathematics, and the relevant subject specific entry criteria. Average point score of 5.5 or above.

Pathway 3 Applicants (3 BTEC Level 3 courses)

We expect Pathway 3 applicants to achieve 5 GCSEs at grades 4-9, with a minimum of a grade 5 in English Language or Literature and Mathematics, and the relevant subject specific entry criteria. Average point score of 4.5 or above

As specified above, applicants need to meet the entry criteria for the subjects they are applying for:

Subject	Exam board	Subject specific entry criteria
Art and Design	Edexcel	Grade 4 in GCSE Art & Design or GCSE Art Photography
Biology	AQA	Grade 6 in Biology or 6-6 in Combined Science and 5 in English Language or Literature and Grade 5 in Maths To study 2 or more Sciences (Chemistry/Biology/Physics) you must have Grade 7s in those subjects and combined science pupils will need Grade 7-7.
Business	AQA	Grade 5 in Business if studied and Grade 5 in Maths and English Language or Literature
Chemistry	AQA	Grade 6 in Chemistry or 6-6 in Combined Science and 5 in English Language or Literature and Grade 6 in Maths To study 2 or more Sciences (Chemistry/Biology/Physics) you must have Grade 7s in those subjects and combined science pupils will need Grade 7-7.
Computer Science	OCR	Grade 6 in Computer Science if studied and Grade 7 in Maths
Economics	AQA	Grade 6 in Maths and Grade 6 in English Language or Literature
English Literature	Edexcel	Grade 6 in GCSE English Literature and English Language
Extended Project (EPQ)	Edexcel	Interest in completing an independent dissertation.

Subject	Exam board	Subject specific entry criteria
French	AQA	Grade 6 in GCSE French
Geography	Edexcel	Grade 5 in Geography if studied & Grade 5 in English Language or Literature
History	Edexcel	Grade 5 in History if studied & Grade 5 in English Language or Literature
Politics	Edexcel	Grade 5 in English Language or Literature
Computing Applications (Cambridge Technical Diploma)	OCR	Grade 4 in IT or equivalent if studied OR Five 9-4 grades including Grade 5 in Maths and English Language
Digital Media (Cambridge Technical Diploma Double Course)	OCR	Grade 5 in Maths, Grade 5 in English Language, Minimum Pass in IT if studied plus 2 additional GCSE's at Grade 4 or above (This double award course can be studied with Computing Applications as a triple award)
Mathematics	Edexcel	Grade 7 in GCSE Maths
Further Mathematics	Edexcel	Grade 8 in GCSE Maths and Physics/8-8 in Combined Science. Average grade score of 7 or above.
RE-Philosophy, Religion and Ethics	WJEC	Grade 5 in GCSE RE if studied and a Grade 5 in GCSE English Language or Literature

Sixth Form Entry Requirements 2026 (cont.)

Subject	Exam board	Subject specific entry criteria
Physics	AQA	Grade 6 in Physics or 6-6 in Combined Science and a Grade 7 in Maths and a Grade 5 in English Language or Literature. Students must also study A Level Maths To study 2 or more Sciences (Chemistry/Biology/Physics) you must have Grade 7s in those subjects and combined science pupils will need Grade 7-7.
Physical Education	OCR	Grade 5 in PE and Grade 5-5 in Combined Science and Grade 5 English Language or Literature. Students should participate in sport regularly for a team or club

Subject	Exam board	Subject specific entry criteria
Psychology	AQA	Grade 5-5 in Combined Science and a Grade 5 in Maths and English Language or Literature.
Sociology	AQA	Grade 5 in GCSE Sociology if studied and a Grade 5 in English Language or Literature
Spanish	AQA	Grade 6 in GCSE Spanish

BTEC		
Subject	Exam board	Subject specific entry criteria
BTEC – Level 3 Diploma in Business Studies	Edexcel	Grade 4 in GCSE Business if studied or Five 9-4 grades including Grade 5 in Maths and English Language
BTEC – Level 3 Diploma in Health & Social Care	Edexcel	A Merit in BTEC Health & Social Care if studied or Five 9-4 grades including 5 in Maths and English Language
BTEC – Level 3 Subsidiary Diploma in Medical Science	Edexcel	Grade 4-4 in Combined Science and grade 5 in Maths and English Language
BTEC – Level 3 Music	Pearson	A Merit in Music BTEC Level 2 or Grade 5 in GCSE Music or Grade 4 in Music Instrumental grades

**To study more than two courses at A Level that the applicant did not study at GCSE an average point score above 6 is required.

Please be aware that all courses on offer are subject to change. This can occur both at enrolment and following the term commencing in September 2026. Subjects can only run if there is a sufficient uptake of students during Sixth Form Enrolment. Please refer to the Sixth Form admissions policy for further clarification.

2026 Admissions - New Year 12				
A	B	C	D	E
Biology	Chemistry	Biology	Geography	Chemistry
Economics	Maths	Sociology	Physics	Comp Sci
English Literature	Physics	Spanish	Sociology	French
History	Psych	Politics	H&SC	Maths
Maths	Medical Science	Business	F. Maths	RE
Psych	Economics	Digital Media	Art	BTEC Music
Computing Applications				Digital Media
				English Literature

Careers Information, Advice & Guidance

at Oaks Park Sixth Form

Oaks Park Sixth Form equips every student with the skills, experience and confidence to achieve ambitious futures through its award-winning careers education programme.

Unrivalled Academic & Careers Support

- One-to-One UCAS & Apprenticeship Support and Personalised Guidance
- Lecture Series - Priority access to leading academic and industry speakers

Elite Academic Pathways & University Preparation

- **Headhunted Programme** for top achievers, offering Oxbridge-style tutorials, mentoring and competitive university support.
- **Oxbridge Programme & Interview Hub**
As this year's Oxbridge Interview Hub for Redbridge, we provide unparalleled preparation for Oxford and Cambridge applications. Additionally, in partnership with Chigwell School, students receive mock interviews, application guidance, unique extra curricular experiences and bespoke summer school access.

Leadership, Mentoring & Super-Curricular Excellence

- **The Super Curriculum Programme;** building skills valued by top universities and employers and extends students learning and personal development through:
 - o Mentoring younger students
 - o Volunteering in the community
 - o Attending academic and industry seminars
 - o Developing skills highly valued by top universities & employers
- **University-Style Societies**
Students lead and create their own societies, showcasing leadership, initiative and subject passion, developing attributes essential for competitive applications

Exclusive Opportunities & Enrichment

- Student-led academic societies to develop leadership and subject expertise.
- Duke of Edinburgh Award for resilience, teamwork and confidence.
- LAMDA for communication and public speaking.
- Funded enrichment trip to Disneyland Paris.

Professional Experience & Mentoring

- **Work Experience & Bespoke Careers Workshops**
Students receive personalised careers support throughout their time with us. This includes targeted workshops linked to future pathways (e.g., engineering with National Rail, tech with Dell, finance with M&G, NHS medics programme), as well as one-to-one guidance with CVs, applications and interview skills.
- They also take part in sessions with universities, employers and industry experts and are supported in securing meaningful work experience that builds real-world skills and strengthens university, apprenticeship and job applications.
- Through our partnership with AXA XL, students gain exclusive access to competitive opportunities including work placements, professional mentoring and mock interviews, offering valuable insight into the commercial and financial sectors and helping them stand out in future careers. This partnership offers unparalleled insight into the commercial and financial sectors, helping students develop professional skills and stand out in competitive fields
- **Careers Accelerator** programme offering one-to-one mentoring, networking and alumni support.

At Oaks Park Sixth Form, every student is supported to aim high and given the tools to get there. Whether your goal is Oxbridge, a degree apprenticeship, or a professional career in a competitive sector, our tailored guidance ensures you stand out.

University Destinations

A selection of most recent student destinations.

Russell Group Universities

Queen Mary University of London

- Aerospace Engineering
- Biological Sciences with Foundation
- Computer Science
- Computer Science with Industrial Experience
- Mathematics
- Mathematics with Finance & Accounting
- Physics with Foundation

UCL (University College London)

- Biomedical Sciences
- Early Childhood Education BA
- Electronic and Electrical Engineering
- Pharmacy

University of Birmingham

- Primary Education with QTS

King's College London, University of London

- Dental Therapy and Hygiene
- Law
- Nursing with Registration as an Adult Nurse
- Pharmacy
- Physics with Theoretical Physics
- Psychology with a Professional Placement Year

University of Nottingham

- Medicine at Lincoln
- Politics and International Relations

University of Southampton

- Medicine BM6 Widening Participation (BMBS)

Other UK Universities

Brunel University London

- Aerospace Engineering with Placement
- Medicine MBBS

Birkbeck, University of London

- Birkbeck, University of London

Goldsmiths, University of London

- Computer Science

Keele University

- Physiotherapy with Integrated Master's

King's University

- Creative and Cultural Industries: Design Marketing

City, University of London

- Accounting and Finance
- Aerospace Engineering with Foundation
- Biomedical and Healthcare Engineering (with placement)
- Business Management (with Professional Placement)
- Business with Marketing
- Children's Nursing
- Civil and Infrastructure Engineering with Foundation
- Computer Science
- Computer Science with Cyber Security (with Integrated Foundation Year)
- Economics
- Economics with Accounting
- Introduction to Optometry
- Law LLB
- Mathematics Finance and Economics (with Integrated Foundation Year)

Lancaster University

- Accounting and Finance

SOAS University of London

- Business, Management, Economics & Law with Foundation Year

St George's, University of London

- Clinical Pharmacology

London South Bank University

- Construction
- Economics (with Foundation Year)
- Social Work

London School of Economics and Political Science, University of London

- Accounting and Finance

Loughborough University

- Automotive Engineering (with placement year)
- Business Economics and Finance
- Economics and Management (with placement year)

Middlesex University

- Computer Science
- Pharmaceutical Chemistry
- Psychology with Counselling Skills

Nottingham Trent University

- Psychology

Ravensbourne University London

- Games Development

Royal Holloway, University of London

- Law
- Psychology

Royal Veterinary College, University of London

- Biological Sciences

University of Brighton

- Geography

University of East Anglia UEA

- Geography with Global Development
- Pharmacy with a Preparatory Year
- Physical Education, Sport and Health

University of East London

- Aeronautical Engineering

University of Hertfordshire

- Initial Year for Extended Degree Science- BIOMEDICAL AND HEALTHCARE SCIENCE
- Sports Therapy

University of Kent

- Architecture with a Foundation Year

University of Greenwich

- Accounting and Finance
- Business Studies
- Computer Science
- Human Resource Management
- Law with Criminology
- Mathematics and Computer Science
- Nursing (Learning Disabilities Nursing)
- Sociology

University of Leicester

- Economics and Data Analytics
- Psychology

University of Reading

- Speech and Language Therapy

University of Sheffield

- Law

University of Surrey

- Accounting and Finance
- Veterinary Biosciences

University of the Arts London

- Animation

University of West London

- Electrical & Electronic Engineering with Foundation
- Forensic Science

University of Westminster, London

- Accounting and Business Management
- Biomedical Science with Foundation
- Business Management (Marketing)
- Computer Science
- Cyber Security and Forensics
- Digital Marketing
- Financial Economics
- Law
- Politics and International Relations
- Psychology
- Quantity Surveying and Commercial Management with Foundation



During the 2024 cycle, 90% of students who applied through the UCAS went on to study university courses, with 18% of students being placed at Russell Group universities. This is the highest number to be placed at a Russell Group university since the Sixth Form was founded, and is well above the national average. All students from Year 13 went onto a known destination, with a number gaining places on prestigious apprenticeship courses with leading firms such as Amazon, Sky and Deloitte.

For more information and to sign up to our weekly newsletter, please visit:

 www.oakspark.co.uk

 @OaksParkHighSch

Oaks Park High School

45-65 Oaks Lane, Newbury Park, Ilford, Essex IG2 7PQ

Tel: 020 8590 2245

Email: admin@oakspark.redbridge.sch.uk

Website: www.oakspark.co.uk

Headteacher

Ms JL Hamill (BSc) Hons

